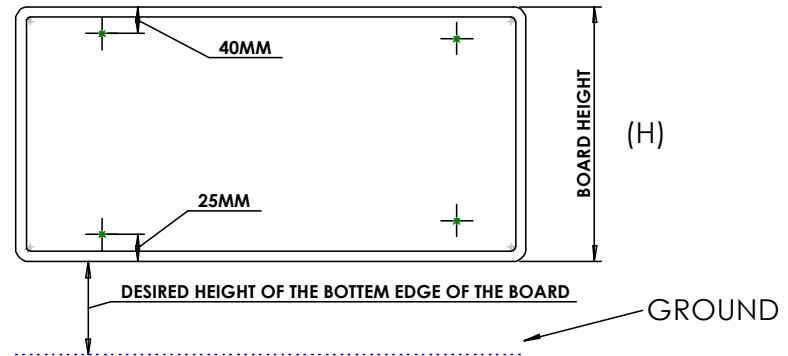
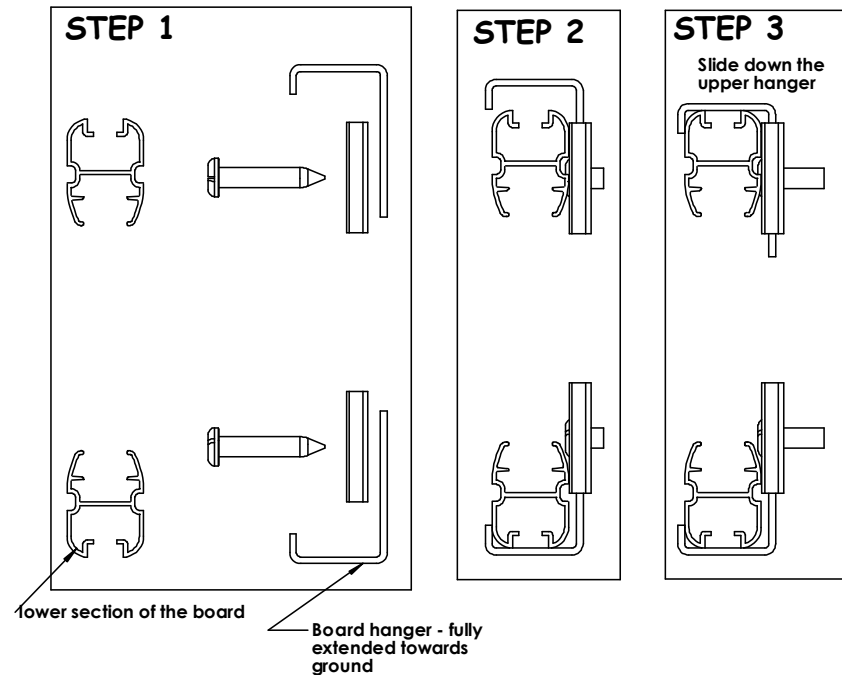


- STEP 1**  
(1) FASTEN THE LOWER CLAMP SETS 25MM HIGHER THEN THE DISIRED BOTTOM EDGE OF THE BOARD  
(2) FASTEN THE UPPER CLAMP SETS AT A DISTANCE OF 40 MM LESSER THAN THE DESIRED HEIGHT OF THE BOARD (H)
- STEP 2**  
(3) PLACE THE BOARD ON LOWER HANGERS
- STEP 3**  
(4) SLIDE DOWN THE UPPER HANGERS



- STEP 1**  
(1) FASTEN THE LOWER CLAMP SETS 25MM HIGHER THEN THE DISIRED BOTTOM EDGE OF THE BOARD  
(2) FASTEN THE UPPER CLAMP SETS AT A DISTANCE OF 40 MM LESSER THAN THE DESIRED HEIGHT OF THE BOARD (H)
- STEP 2**  
(3) PLACE THE BOARD ON LOWER HANGERS
- STEP 3**  
(4) SLIDE DOWN THE UPPER HANGERS